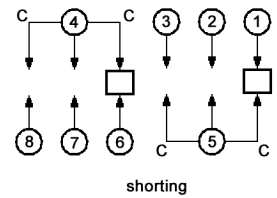
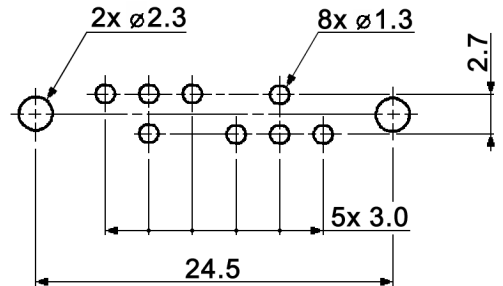


CIRCUIT DIAGRAM  
C: COMMON PIN  
BOTTOM VIEW



HOLE LAYOUT  $\pm 0.05$



Specifications:

- Contact rating: 350mA, 30V DC
- Contact resistance: 20mOhm max.
- Insulation resistance: 100MOhm min. at 500V DC
- Dielectric strength: 500V, 50Hz for the duration of 1 minute
- Operating temperature: -20°C to +85°C
- Mechanical life: 10 000 cycles min.
- Soldering conditions: auto-soldering: max.: 260 +/-5°C, 5sec.
- Switching function: on - on - on
- Material: Terminal: brass strip, silver plated  
Frame: steel, nickel plated  
Base: phenolic resin, natural  
Contact plate: brass strip, silver plated  
Spring: SWC, temper  
Steel ball: carbon steel, natural  
Slider: POM, black

x	L (mm)
(empty)	8
4	4

Compliance: RohS III (2015/863/EU)

Tolerances: up to 10: ±0.2mm above 10-50: ±0.3mm	Date	Name
	02/12	dr

**MFP 231 P-x**

**knitter-switch**

**30 25 57**

Page

1/1

Modifications	Date	Name